

REDMOND

Thermopot RTP-M801

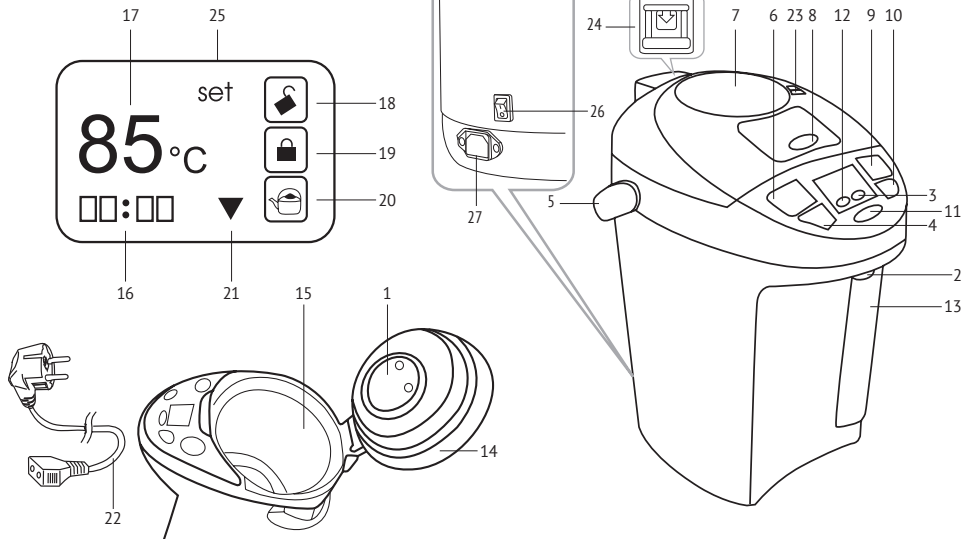



User manual

CONTENTS

IMPORTANT SAFEGUARDS.....	4
Technical Specifications	6
Package Includes	6
Parts of Appliance.....	7
I. PRIOR TO FIRST USE	7
II. OPERATING THE APPLIANCE	8
Use the thermopot	8
Ways to supply water	8
Selecting the temperature	8
Timer adjustment	8
III. CLEANING AND MAINTENANCE	9
Descaling	9
Storage and transportation	9
IV. BEFORE CONTACTING SERVICE CENTER.....	9

A1




 Carefully read all instructions before operating the appliance and save them for future reference. By carefully following these instructions you can considerably prolong the service life of your appliance.

The safety measures and instructions contained in this manual do not cover all possible situations that may arise during the operation of the appliance. When operating the device the user should be guided by common sense, be cautious and attentive.

IMPORTANT SAFEGUARDS

- The manufacturer is not responsible for injuries caused by failure to comply with the safety requirements and operation rules of the appliance.
- This appliance is intended to be used for non-industrial use in household and similar spheres of application. Industrial application or any other misuse will be regarded as violation of proper service conditions. Should this happen, manufacturer is not responsible for possible consequences.
- Before plugging in the appliance ensure that the circuit voltage matches operating voltage of the appliance (see technical specifications or manufacturer's plate on the appliance).

- Use an extension cord designed for the power consumption of the appliance as the parameter mismatch may result in a short circuit or fire outbreak.
 - Use only earthed electric sockets as this is an obligatory safety requirement. Use an earthed extension cord as well.
 - Unplug the appliance after use, while cleaning or moving. Remove the power cord with dry hands holding it by the plug, not cord.
-  **CAUTION!** *Appliance runs hot while operating. Do not touch the housing while the appliance is operating. Do not lean over the appliance when the lid is on to avoid scalds.*
- Never open the lid while boiling.
 - Use the appliance for its intended purpose only. Otherwise it will be considered as misuse.
 - Use the appliance for water heating only. Do not use it to heat milk or any other liquids.

- Do not place the cord in doorframes or by heat sources. Do not twist or bend the power cord, ensure that it is not in contact with sharp objects, corners and edges of furniture.

STOP

REMEMBER: Accidental damage to the power cord may cause electric shock or breakdown not covered by the terms of warranty. Promptly contact the service centre to have the damaged power cord replaced. Do not place the appliance on soft, unstable surface.

- Do not put the appliance on temperature-sensitive surface, do not cover the appliance while it is in operation as it may result in a fault or breakdown of the appliance.
- Do not use the appliance outdoors as ingress of moisture or foreign objects inside the housing can result in damage.
- Use the appliance at an altitude of no more than 2000 m.

- Before cleaning the appliance ensure that it is unplugged and has cooled down. Follow the instructions while cleaning the device.

STOP

DO NOT immerse the appliance in water or keep in running water!

- This appliance can be used by children aged from 8 years and above and persons with reduced physical, sensory or mental capabilities or lack of experience and knowledge if they have been given supervision or instruction concerning use of the appliance in a safe way and understand the hazards involved. Children shall not play with the appliance. Keep the appliance and its cord out of reach of children aged less than 8 years. Cleaning and user maintenance shall not be made by children without supervision.
- Keep the packaging (film, foam plastic and other) out of reach of children as they may choke on them.

- No modifications or adjustments to the product are allowed. All service and repair works should be carried out by an authorized service centre. Failure to do so may result in device and property damage or injury.

STOP

CAUTION! Do not use the appliance in case any breakdown has been noticed.

Technical Specifications

Model.....	RTP-M801
Power.....	750 W
Electrical safety.....	class I
Voltage.....	220–240 V, 50/60 Hz
Capacity.....	3.5 l
Water tank material.....	stainless steel
Number of ways to supply water.....	3
Water boiling.....	available
Mode to maintain the desired water temperature ..	65, 85, 98°C
Indication of operating modes.....	available
Water level graduated scale.....	backlit
Display.....	LCD
Removable lid.....	available
Anti-calc filter.....	available
Removable power cord.....	available
Water supply lock.....	available
Carrying handle.....	available
Power cord length.....	1.2 m
Timer.....	3, 6, 12, 18, 24, 48, 72, 99 hours
Overall dimensions.....	310 × 224 × 322 mm
Net weight.....	2.7 kg

Package Includes

Thermopot.....	1 pc.
User manual.....	1 pc.
Service book.....	1 pc.

In accordance with the policy of continuous improvement, the manufacturer reserves the right to make any modifications to design, configuration, or specification of the product without prior notice. The specification allows an error of $\pm 10\%$.

Parts of Appliance (scheme **A1**, p. 3)

1. The inside of the lid
2. Spout with button for water pouring by bringing a cup
3. Temperature maintenance indicator
4. Timer button
5. Carrying handle
6. Reboil button
7. Pump
8. Lid opening handle
9. Button for pouring water
10. Button for enabling and disabling the water supply lock
11. Water temperature setting button
12. Boiling indicator
13. Water level scale with a mark of the minimum allowable level
14. Removable lid
15. Metal water tank
16. Timer value
17. Set temperature value for the "Keep warm" function
18. Unlocked water supply indicator
19. Locked water supply indicator
20. Availability indicator
21. Heating indicator
22. Power cord
23. Pump lock
24. Lid release button
25. Display
26. I/O power switch
27. Connector for power cord

I. PRIOR TO FIRST USE

Carefully take the appliance and its detachable parts out of the package.



Remove all wrapping materials and stickers except for the serial number identification sticker!

After the appliance transportation or storage at low temperature keep it at room temperature for at least two hours before plugging in.


Wipe the base of the appliance with a damp cloth, then let it dry. Make sure there is no moisture in the power cord socket.

Pour water into the thermopot up to the maximum mark and boil it to disinfect the appliance and remove possible foreign odours. Drain water from the thermopot completely. Drain the remaining water through the right or left side of the thermopot with the lid removed. Do not allow water to get on the control panel and power cord socket.


II. OPERATING THE APPLIANCE

Use the thermopot

1. Place the appliance to the dry, solid, horizontal surface. Ensure the escaping steam does not fall on wallpaper, decorative coats, electric units and other items, which can be damaged by steam and high temperature.
2. Raise the lid opening handle.
3. Pull the lid up.
4. If you want to remove the lid, hold the lid opening handle up, press the lid opening button and lift the lid angle wise. To put the lid into place, follow the steps described in reverse order.
5. Pour water into the thermopot up to the FULL mark and close the lid until it clicks.


 **CAUTION!** To avoid appliance overheating, it is not recommended to pour less than 0.5 liters of water. Refill water regularly to prevent boiling over.



6. Connect the appliance to the mains. Set the I/O power switch on the back of the appliance to position I. The boil indicator lights up and water starts to boil.

 **CAUTION!** The thermopot is equipped with a shutoff system in case if there is not enough water. If there is no or not enough water in the appliance, it will turn off automatically.

Ways to supply water

After the boiling indicator (red one) goes out and the Keep Warm indicator (green one) lights up, you can start pouring hot water by placing a cup under the spout

1. Press the lock button to unlock the water supply (the  indicator will light up on the display).
2. Press and hold the "Налить" button until your cup is full.
3. Press the edge of the cup to the special button located near the spout of the appliance. Hold it until your cup is full.
4. Press the pump until your cup is full.

 *In order to lock water supply using the pump, move the lock on the lid of the appliance to the "Close" position. To lock the water supply using the button next to the spout or the "Налить" button, press the "Блокировка" button (the button indicator will go out, the  indicator will light up on the display). The locking function protects your children and prevents accidental water pouring from the thermopot.*

Selecting the temperature

After the water boils, the thermopot will automatically switch to temperature selection and maintenance mode. To set the desired value, press the temperature setting button to select one of three options: 65°C, 85°C, 98°C.

The selected temperature will appear on the display. When the set temperature is reached, the availability indicator appears on the display.

To reboil, press the corresponding button.

Timer adjustment

The on-delay timer will help you reduce energy costs.

1. To set the timer, press the "Таймер" button. The time value on display will start blinking.

2. Press the "Таймер" button to set the desired value. The timer can be set to 3, 6, 12, 18, 24, 48, 72, 99 hours.
3. Press the "Установка температуры/времени" button to select the desired water temperature.
4. Once you set the timer, it starts counting down. When the timer is reset, the thermopot will start heating again.

III. CLEANING AND MAINTENANCE

Before cleaning, unplug the appliance. Gently wipe the inner tank with a sponge and rinse with water. Clean it with citric acid once a month. Wipe the thermopot body and lid with a damp cloth.

STOP

DO NOT clean with abrasives or chemical substances not recommended for items that come into contact with foodstuffs.

DO NOT immerse the appliance in water or wash under running water!

Descaling

Regular descaling of the thermopot will extend its service life. Under normal use of the appliance, it is recommended to carry it out at least once every 2–3 months.

1. Fill the thermopot to three quarters of the maximum volume and bring water to a boil.
2. When the thermopot switches to the heating mode, disconnect it from the mains, add an 8% solution of acetic acid to it to the maximum level mark and leave it for several hours.
3. Remove the lid, discharge water from the appliance and rinse the tank thoroughly. Reinstall the lid.

4. Pour clean water into the thermopot, close the lid until it clicks, connect the power cord to the mains and wait for it to boil.
5. Disconnect the thermopot from the mains and discharge water from it. Rinse it again with clean water.
6. If there is still some scale in the thermopot, repeat as described above.

You can also use a special descaling agent. In this case, follow the manufacturer's instructions.

Storage and transportation

Before repeated operation or storage completely dry all parts of the appliance. Store the assembled appliance in a dry, ventilated place away from heating appliances and direct sunlight.

During transportation and storage, do not expose the device to mechanical stress, that may lead to damage of the device and/or violation of the package integrity.

Keep the device package away from water and other liquids.

IV. BEFORE CONTACTING SERVICE CENTER

Problem	Possible cause	Solution
The appliance does not switch on	No power supply	Connect the appliance to a properly working electric socket

Problem	Possible cause	Solution
Error message is displayed on the screen «E3»	The appliance overheats during operation, over-heating protection tripped	Turn the switch to the 0 position, unplug the appliance from the mains and let it cool down. Plug it back into the mains. If the appliance still doesn't work, apply to the service center
During operation of the appliance there was a foreign smell	Some parts of the new appliance may have a foreign odour	Perform the pre-boil procedure

i *In case you didn't manage to eliminate the defects, please, refer to the authorized service centre.*



Environmentally friendly disposal (WEEE)

The packaging, user manual and the device itself shall be taken to the applicable collection point for the recycling of electrical and electronic equipment. Do not throw away the electronic waste to help protect the environment.

Old appliances must not be disposed with other household waste but must be collected separately. Municipal disposal of recyclable wastes is free of charge. The owners of old appliances are required to bring it to a waste facility centre. With this little extra effort, you can help to ensure that valuable raw materials are recycled and pollutants are treated as appropriate.

This appliance is labelled in accordance with European Directive 2012/19/EU – concerning used electrical and electronic appliances (waste electrical and electronic equipment WEEE).

The guideline determines the framework for the return and recycling of used appliances as applicable throughout the EU.

Manufacturer: "Power Point Inc Limited" №1202 Hai Yun Ge (B1) Lin Hai Shan Zhuang Xiameilin Futian Shenzhen, China. 518049. Under license of REDMOND®
Изготовитель: «Пауэр Пойнт Инк. Лимитед» №1202 Хай Юн Гэ (B1) Лин Хай Шан Чжуан Сямейлин Футьян, Шеньжень, Китай, 518049. По лицензии REDMOND®

Виробник: «Пауер Поїнт Інк. Лімітед» № 1202 Хай Юн Ге (B1) Лін Хай Шан Чжуан Сямейлін Футьян, Шеньжень, Китай, 518049. За ліцензією REDMOND®

Importer (EU): SIA "SPILVA TRADING" Address: Jelgava, Meiju cels 43 – 62, LV-3007 Reg. Nr. 43603078598. **BA** Uvoznik i distributer za Bosnu i Hercegovinu: ASBIS d.o.o., Džemala Bijedića 162, 71 000, Sarajevo, Bosna i Hercegovina. Tel: +387 33 770 200, e-mail: prodaja@asbis.ba, www.asbis.ba. **BG** Вносител: АСБИС България ЕООД И.Н.: BG121655056 Адрес: София, бул. Искърско шосе 7 ТЦ Европа, стр. 3. Тел.: 02/4284111, www.asbis.bg. **CZ** Dovozece: ASBIS CZ spol. s r.o. Obchodni 103, 251 01 Cestlice, Praha – vychod, Praha, Czech Republic. Tel: +420 272 117 111, www.asbis.cz. **HU** Importőr: ASBIS Magyarország Kft. H-1135, Budapest, Reitter Ferenc utca 46-48. Tel: +36 1 236-1000, Fax: +36 1 236-1010, www.asbis.hu. **PL** ASBIS POLAND SP. Z O.O., Ul. Krasnowolska 17 A, 02-849 Warszawa. Tel: +48 22 33 71 510, www.asbis.pl. **RO** Importator: ASBIS Romania SRL, Splaiul Independentei 319, SEMA PARC, Obiectiv 5, Etaj 2, Sector 6, Bucuresti, 062650, Romania. Tel: +40 21 337 1099, www.asbis.ro. **RU** Импортёр в России: ООО «ИЛОТ», 198099, г. Санкт-Петербург ул. Промышленная, д. 38, к. 2, лит. А, тел.: +7(812) 740-16-30. **SK** Importér/distribútor pre SR: ASBIS SK spol. s r.o., Tuhovská 33, 831 06, Bratislava. Tel: +440-2-32165111, www.online.asbis.sk. **RS** Uvoznik i servis za Republiku Srbiju: ASBIS d.o.o. Cara Dusana 205A, 11080 Zemun, Beograd. Tel: +381 11 310 77 00, www.asbis.rs. **LV** Izplatītājs: SIA „ASBIS BALTICS”, Latvija, Rīga, Bauskas iela 58A-15, LV-1004. Tel: +371 66047820, e-mail: sales@asbis.lv, www.asbis.lv. **UA** Імпортер в Україні: ТОВ ПІІ «АСБІС-УКРАЇНА», 03061, м. Київ, вул. Газова, будинок 30. Тел. +38 044 455 44 11, www.asbis.ua. **SI** Distributer, dajalec garancije in servis za Slovenijo: Asbis d.o.o., Brodišče 15, 1236 Trzin. Tel: + 386 (0) 590 79 927; e-mail: infosales@asbis.si; www.asbis.si. **HR** ASBIS-CR d.o.o., Slavenska avenija, 24/6 -1 kat, 10000, Zagreb, Croatia; tel: + 385 1 600 9900, e-mail: prodaja@asbis.hr; www.asbis.hr. **EE** Maaletooja: SIA „ASBIS BALTICS”, Juri 10c, 11313, Tallinn, Estonia; tel: + 372 66047815, e-mail: sales@asbis.ee; www.asbis.ee. **LT** Importuotojas: SIA „ASBIS BALTICS”, Ateities g. 25B, 06326, Vilnius, Lietuva; tel: +370 66047814, e-mail: sales@asbis.lt; www.asbis.lt. **CY** Importer Cyprus: ASBIS Kypros Limited, 26, Spyrou Kyprianou Str, 4040, Germasogeia, Limassol, Cyprus. Tel: +357 25 257 350; Fax: +357 25 322 432, e-mail: info@asbis.com.cy; www.asbis.com.cy

www.redmond.company
www.multivarka.pro
www.store.redmond.company
www.smartredmond.com
Made in China

RTP-M801-ENG-UM-1